



UNIDAD EDUCATIVA "SAGRADO CORAZÓN DE JESÚS"
HERMANAS BETHLEMITAS
COMPONENTE DE GESTIÓN PEDAGÓGICA

INSTRUMENTO DE APOYO PEDAGÓGICO

CODIGO:
NC
VIGENCIA:
13-03-2020
VERSIÓN 1
Página 1 de 2

SUBJECT:	English	COURSE:	Eighth	
TEACHERS:	Lic. Karla Flores Lic. Evelyn Analuisa	CLASS:	A- B - C	
STUDENT'S NAME:		DATE:		

INSTRUCTIONS:

- ✓ READ **CAREFULLY** THE INSTRUCTIONS.
- 1. Watch the video about "WAS and WERE" (<https://www.youtube.com/watch?v=fAsPrFwnQKk>)
- 2. Students have to elaborate a creative "WORD-MAP" in their **NOTEBOOK** about the video.
- 3. After that, listen to this song. **I WAS MADE FOR LOVIN`YOU**
(<https://www.youtube.com/watch?v=BBtF7-nqOp0>)
- 4. Complete the activities below in the **NOTEBOOK**.
- 5. If you don't have your **NOTEBOOK**, do these activities in another **SHEET OF PAPER**.
- 6. Take a photo of the 2 activities and send to this email: teacherkarla91@gmail.com
- 7. **Complete the platform about this topic**

"I Was Made For Lovin' You" by kiss

Choose what you hear

Tonight I wanna give/lead it all to you

In the light/darkness

There's so much I/we wanna do

And tonight I wanna lay it at your knee/feet

'Cause girl, I was made/take for you

And girl, you/we were made for me

Match

- | | |
|--------------------|------------------------|
| 1. I was made | a. enough of me |
| 2. You were made | b. enough of you baby |
| 3. And I can't get | c. for lovin' me |
| 4. Can you get | d. for lovin' you baby |



UNIDAD EDUCATIVA "SAGRADO CORAZÓN DE JESÚS"
HERMANAS BETHLEMITAS
COMPONENTE DE GESTIÓN PEDAGÓGICA

INSTRUMENTO DE APOYO PEDAGÓGICO

CODIGO:
NC
VIGENCIA:
13-03-2020
VERSIÓN 1
Página 2 de 2

Complete

Tonight I wanna see it in your _____

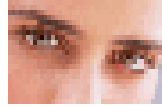
Feel the _____

There's something that _____ me wild





And tonight we're gonna make it all come true

'Cause girl, you were made for me

And girl I was made for you



chorus

DONE:	SIGNATURE:	REVISED	APPROVED:
Lic. Karla Flores			
Lic. Evelyn Analuisa		Lic. Cristina Tapia AREA COORDINATOR	Lic. Fernanda Zumba VICEPRINCIPAL